



WWW.SAMYUNGENC.COM



GPS

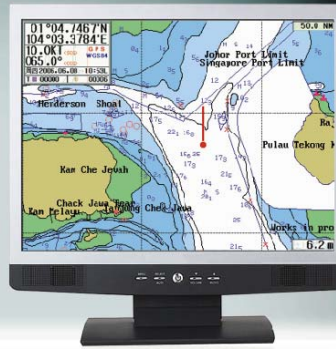
SGP-330

P.P.U (Plotter Processing Unit)

Chart plotter with various monitors in option !!

NEW

C-MAPNT⁺



◆ **PPU (Plotter Processing Unit)**

-GPS plotter's display is separated from processing unit and user can choose various size of display.

◆ **All monitor using for PC**

-LCD & CRT monitor support RGB input

-Available to use two monitors using monitor distributor if necessary

◆ **Two kinds of sea-chart**

-Digital Electronic Sea-chart/C-Map NT⁺

◆ **Fast and easy operation**

-High speed CPU engine offers fast and safe data process.

-Smoothing chart change which is not disappeared when zoom-in and out.

◆ **Multi languages**

-Korean, English, Simplified/Traditional Chinese, Russian and Greek etc.

◆ **SD CARD (Secure Digital)**

-For data back-up & program update

◆ **Remote**

-Wire/Wireless remote, remote backlight, soft rubber pad, waterproof

◆ **External Remote Sensor (Option)**

-Easy installation

-Remote control regardless of main unit's location.

 **SAMYUNG ENC Co.,Ltd.**

SPECIFICATION

GENERAL(Main Unit)

- RGB Signal : All CRT/LCD monitor supported by RGB input
Also available to use two monitors using monitor distributor
- Display : 640×480 pixels 256 color
- Power Supply : DC8V~36V
- Power Consumption : below 5W
- Temperature/Humidity : -15°C ~ +50°C / 95%(+30°C ~ +60°C)
- Signal Correction and Tracking : Automation using microcomputer tracking
- Position Precision and Tracking : 15m RMS, PDOP≤3.0(without SA)
- Speed Precision : 0.1 Knots RMS, PDOP≤3.0(without SA)
- Data Recovery Time : 1 Sec.
- Initial Measuring Time : 24 Sec.
- Date Renewal Interval : 1 Sec.

GPS RECEIVER

- Receiving Frequency : L1 1575.42 ± 1MHz (C/A code)
- Receiving Type : 18 Channels Multi Tracking Type
- Receiving Channel : 18 Channels
- Receiving Sensitivity : Less than -130dBm

PLOTTER

- Projection : Mercator drawing
- Display Scale : 0.2 mile ~ 5,000 mile(1/2,500 ~ 1/37,500,000)
- Effective Display Range : below 85° of latitude
- Display Mode : true-motion, course-up, north-up, head-up function
- Tracking Memory Interval : 1sec~60minute(0.01~9,99NM) set-up
- Tracking capacity : 20,000 points

- Event mark : 21 kinds
- Mark capacity : 10,000 points
- capacity for user's drawing of shoreline : 8,000points
- 16 land coloring
- capacity for user's marking of shoreline : 1,000points
- capacity for user's character of shoreline : 1,000points
- capacity for tracking marking : 1,000points
- capacity for memory of destination : 1,000points
- capacity for memory of route : 20 routes (20 points/1 route)
- Alarm : 1)arriving alarm 2)off-course alarm 3)anchor alarm 4)boundary alarm
- Interface : SAMYUNG, NMEA0183, FURUNO(CIF), JRC

COMPONENT

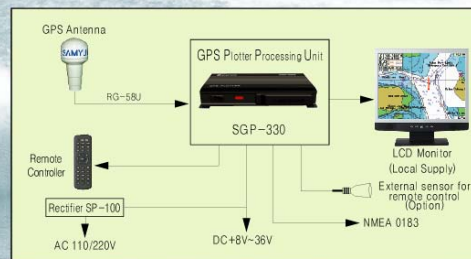
STANDARD

- Main Unit(SGP-330)
- GPS Antenna(SAN-60)
- Remote controller(REM-330)
- Installation materials, spare parts, manual

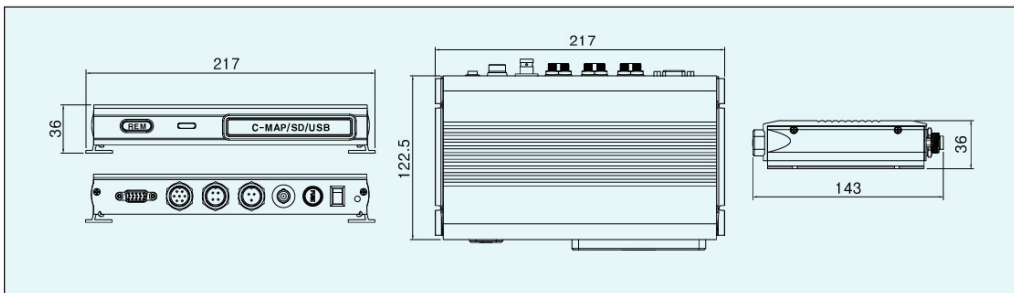
OPTION

- External sensor for remote control
- Rectifier(SP-100)

CONFIGURATION



DEMENSIONS



* Specification is subject to change without pre-notice



Head Office : 1123-17, Dongsam-Dong, Youngdo-Gu, Busan, Korea, 606-083
Tel : 82-51-601-5530(Rep.) **Fax** : 82-51-413-4446
A/S Center : 65-20, 2-Ga Namhang-Dong, Yungdo-Gu, Busan, Korea, 606-032
Tel : 82-51-601-5570~4(Rep.) **Fax** : 82-51-416-5515
Http : //www.samyungenc.com



ISO 9001:2000 / KS A 9001:2001
 Certificate No. : RQM0645

